



TeleTrader WebStation

The Financial Markets Information Platform

Your easy access to information.

Independent. Efficient. Professional.

Running in the Browser

The screenshot displays the TeleTrader WebStation interface. On the left, there's a 'MARKET OVERVIEW' table with columns for Name, Last, Chg., and Date/Time. Below it are sections for 'CURRENCIES', 'INTEREST RATES', and 'COMMODITIES'. The main area shows a detailed view for 'DEUTSCHE BANK AG NA O.N.' with a bid-ask table, a line chart, and a 'PERFORMANCE' table. A 'Market Depth' table is also visible. On the right, there are language selection buttons for GER, ENG, SPA, and HUN. A yellow sticky note is placed over the chart area with the text 'Running in the Browser'. In the bottom right corner, a smartphone displays the TeleTrader mobile app interface, showing a list of indices like Dow Jones, S&P 500, and EuroStoxx 50.

→ Market Data

Real-time prices, market depth, time & sales and historical data

→ News and Fundamental Data

Worldwide news from leading agencies

→ Charts and Technical Analysis

Daily, intraday and tick data as well as technical indicators and drawing tools

→ Mobility

In a browser, on a tablet or on a Smartphone – use it anywhere, anyplace

<http://webstation.teletrader.com>

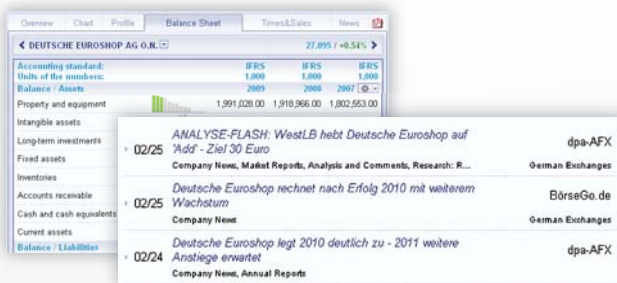
The TeleTrader **WebStation** is the information platform for the institutional user. The WebStation provides real-time prices and historical data along with news, charts and technical analysis. Due to the browser-based platform, the supply for large and distributed user groups can be established with ease. This is additionally supported by a permission system allowing the configuration of exchanges, news and other sources for groups and single users.

MARKETS OVERVIEW			
Name	Last	Chg.	Date/Time
DJ Indu	12,401.55	+0.66%	04/01 / 16:41:31
Nasdaq 100	2,352.92	+0.60%	04/01 / 16:41:33
S&P 500	1,336.13	+0.78%	04/01 / 16:25:41
FTSE 100	6,002.57	+1.59%	04/01 / 16:26:33
TechMARK 100	2,158.33	+0.80%	04/01 / 16:26:00
Nikkei 225	9,708.39	-0.48%	04/01 / 08:00:03
DAX	7,177.80	+1.94%	04/01 / 16:41:33
SMI@ PR	6,442.54	+1.34%	04/01 / 16:26:19
DJ Stoxx 50	2,521.24	+1.48%	04/01 / 16:41:30
DJ EuroStoxx 50	2,958.98	+1.65%	04/01 / 16:41:30

Data and Functions

- » Worldwide exchanges and other markets
- » Real-time prices
- » Automatic push updating of all price data
- » Historical tick, intraday and daily data
- » Extensive search capabilities and preconfigured chains
- » Market depth and times & sales

- » Stocks, indices, bonds, mutual funds, ETFs, futures, commodities, interest rates, currencies and much more
- » Mutual fund comparison including closed-end funds
- » Watch list, portfolio and alarms
- » Data export and printing
- » Excel copy/paste and real-time link via RTD



News and Fundamentals

- » Real-time news
- » News filters
- » Analyst reports and recommendations
- » Extensive fundamental data on worldwide companies
- » Company and mutual fund profiles, mutual fund prospectuses
- » Live creation and export of PDF factsheets

Charts and Technical Analysis

- » Tick, intraday, daily, weekly and monthly charts
- » 5 different chart types
- » Linear, logarithmic and percentage scale
- » Overlay of securities
- » Continuation contracts for futures
- » Over 100 indicators
- » Drawing tools like lines, trend channels, text, Fibonacci retracements and much more
- » Print, save and load charts



TELETRADER mobile

Work on the go: Same user access, same data, same price pages and portfolios

- » Real-time prices with automatic updating
- » Market depth
- » Charts and technical indicators
- » Current news

In combination with TeleTrader WebStation, exchange fees are only charged once.



Free trial available: products.teletrader.com/mobile